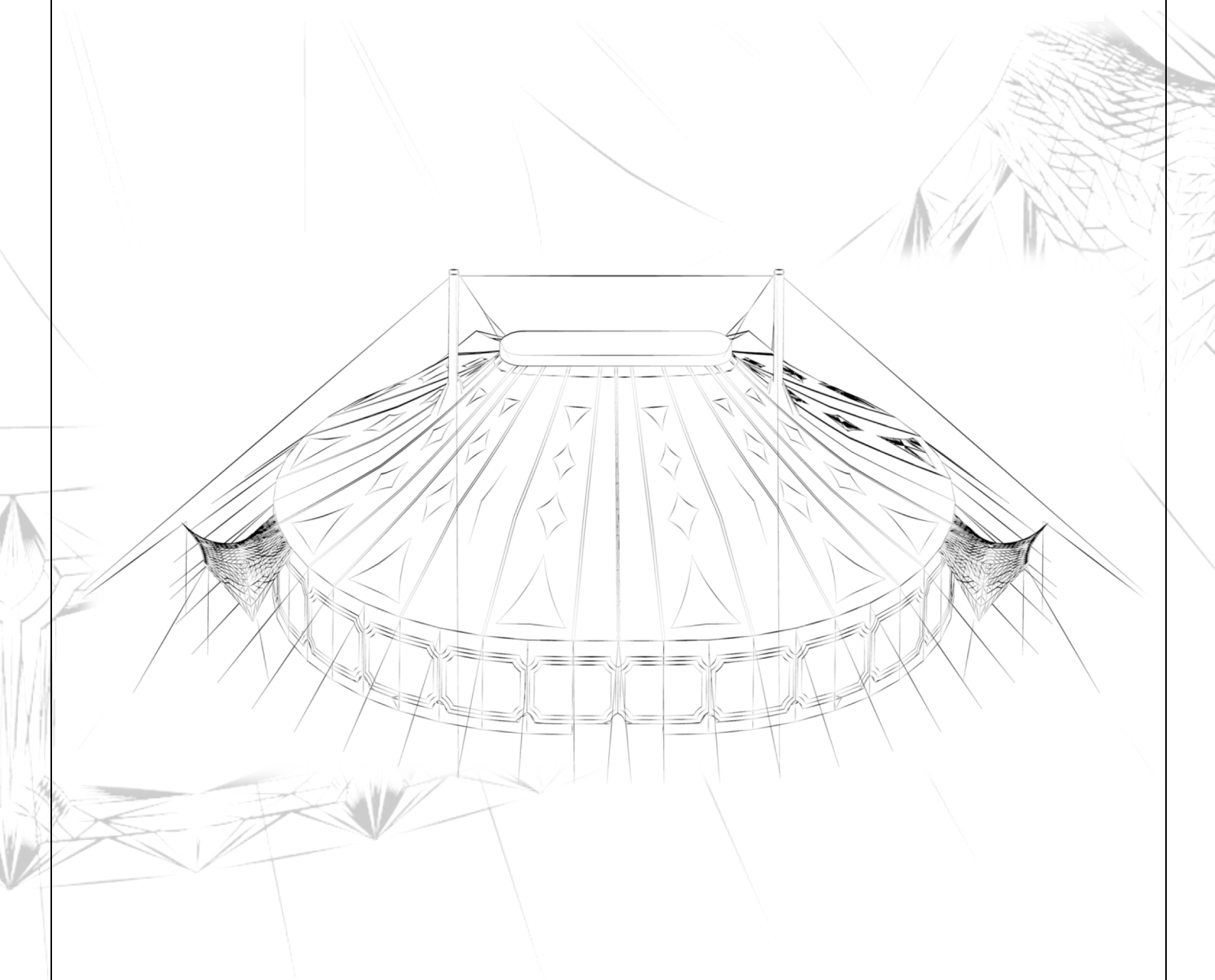


- Le Grand Théâtre Éphémère -



- TECHNICAL RIDER - SPRING 2024

PRODUCTION CONTACT

Julia Moa Caprez et Igor Sellem
+33(0) 682 317 027
lesroisvagabonds@gmail.com

Cie Les Rois Vagabonds
7 rue de la Langouette
36150 CHAUX DES CROTENAY
www.lesroisvagabonds.com

TECHNICAL MANAGEMENT

Sacha Pinget
+33(0) 648 057 521
regie.vagabonds@gmail.com



PRESENTATION

- **Big Top**
- **Vehicles**

INSTALLATION CONDITIONS

- **Dimensions**
- **Equipment supplied by the Organizer**
- **Administrative formalities and safety**
- **Local crew and schedule**

TECHNICAL EQUIPMENT PROVIDED BY THE COMPANY

- **Structure**
- **Light**
- **Sound**
- **Textiles - Set**

APPENDICES

- **Structural drawing**
- **Exterior view**
- **Interior view**
- **« Concerto Pour Deux Clowns » - Lighting layout**
- **« Concerto pour deux clowns » - Sound**

PRESENTATION

• Big Top

- Oval big top measuring 18m x 22m, 28m x 35m with wires, 31m x 42m overall (including campsite and security half-perimeter)
- 2 Black king poles (Eiffel), H = 12m
- 4 Black queen poles (tubes), H = 6.70m
- Italian-style cupola, width 1.50m, length 7.50m
- Clearance under the dome: 9m
- Wall's Height : 3.50m
- Establishment of CTS type, 3rd category (FR)
- Identification number: C.69.2020.023
- Exterior colors : Sand and Bordeaux
- Interior color : Midnight Blue
- 2 emergency exits, each 1.8m wide
- 2 Water + Additive fire extinguishers, 1 CO2 fire extinguisher, 1 Powder fire extinguisher (if heating is present)
- Semi-circular grandstand with 227 seats + 100-seat chair parterre
- 140m² floor
- Stage : 7m x 8m, H= 0.7m
- 1 control cabin behind the grandstand
- 1 Electrical cabinet 63A tetra
- 1 Forced air heating with a 400L fuel oil tank

• Vehicles

- 44-tonne truck, h=4,2m, l=17 m
- 15.5-tonne truck, h=3,5m, l=19m
- LV convoy, h=2,8m, l=14m
- LV convoy, h=3m, l=12m

The convoys number and size may vary depending on reception conditions. Please contact the company.

Seating capacity : 327

Each wheelchair accommodated counts as 2 seated persons

INSTALLATION CONDITIONS

• Dimensions

- Open, level and stable area of at least 28 m x 35 m.
- Safety perimeter at least 3 m wide and 3.50 m high. This area must be free of all vehicles, including those of the company and the organizer.
- A total of 200 m² of free space for vehicles and camping, preferably behind the big top.
- Site access for heavy vehicles: 44T, 3.5m wide, 4.2m high
- Scaled plans of the site, must be submitted to the company prior to site approval.
- Plans of underground pipelines must be submitted to the company prior to site approval.
- If forced-air heating / cooling is to be used, it must be possible to install it 5m from the tent walls.

• Equipment supplied by the Organizer

- 1 x 63A tetra power supply in service at the team's arrival within 40m of the tent
- If possible, 1 x 16A power supply within 40m around the big top.
- 1 Diesel telescopic handler, lifting capacity: 1.5T / 6m minimum for the first set-up day and the second dismantling day.
- 70 L of superior heating oil per day in case of heated representations (approx. 15L/hour)
- An Air-Conditioning system sized for the big top in case of early summer representations (before 8:30 p.m)
- A garbage can for household waste and a recycling bin with regular collection. Our camp is equipped with dry toilets, a place to empty them regularly (2x per week) is requested from the organizer.
- Public access to toilets close to the big top with access to persons with reduced mobility (the dry toilets in the camp are reserved for the company's use).
- Sanitaries access for the company's crew. (toilets and showers) close to the big top.
- A dozen barriers, to be determined together according to the topography of the site.

- **Administrative formalities and safety**

- The organizer must produce a scaled site plan with emergency access, water and electricity poles. This plan must be approved by the company's technical team. If you encounter any difficulties, please contact us : regie.vagabonds@gmail.com. We can also produce a site plan if required.
- The company will provide the safety register extract, the interior layout plan, and any other document that may be requested, depending on the legislation of the country where the venue is located.
- The company's team includes sufficient personnel to ensure the safety of the audience during performances. To be agreed upon according to the country of location's legislation.

- **Local crew and schedule**

- Set-up time : 2 days of 12 hours **each**, arrival of the company at least **3 days** before the first performance
- Dismantling time: 2 days of 8 hours each
- The organizer will provide an assembly and dismantling team in good physical condition, equipped with safety shoes and handling gloves.
- Set-up: 8 people on the first day and 3 people on the second.
- Dismantling: 3 people on the first day and 8 people on the second.
- A reception team for each performance day (to be determined together according to requirements). Minimum 2 people.

Technical Equipment provided by the company

• Structure

- Lighting grid on 4 manual chain hoists
1 counter truss (300 triangle), point down L = 9m, clearance = 4,4m
2 black side poles 300 ladders L = 6m clearance 4.8m
- 2 tubes on each front Queen poles

• Light

Control :

- 1 ETC EOS Nomad with Ethernet / DMX Node
- 1 Berhinger BCF 2000 with motorised faders
- 1 Tablet with wireless computer remote control
- 1 Splitter in control room

Power :

- 1 63A electrical cabinet with 12 direct lines (4 per phase), 1 63A output and 2 32A outputs
- 29 graduated lines, including:
 - 3 on the left frontbar
 - 3 on the right frontbar
 - 5 in the cupola
 - 18 in the backstage
- 4 Multicore / 8 pairs including 1 in the cupola

Spotlights :

- 8 x Briteq BT Theatre HD2
- 6 x WW/CW Led PC (100W)
- 10 x PAR 64 (CP62 / CP61 / CP 88 lamps)
- 6 x PC 500W
- 6 x xPC1000W
- 2 x 1000W 25°/50 profiles
- 8 x 500W Quartz
- 1x Low-fog machine

- **Sound**

- 1 x Yamaha LS9 16in / 8out (on stage) with Stage Manager remote control (in control cabin)
- 1 x Audio multicore 12in / 8out
- 1 x DBX Driverack 260 active filter
- 1 x RCF QPS 9600 4-channel amplifier
- 1 x Crest Audio 2-channel amp
- 4 x RCF M1201 speakers
- 2 x LDESUB15G3 15-inch subwoofers
- 2 x RCF Monitor 8 (out fill)
- 2 x 15°/120° speakers (front fill)
- 2 x Berhinger Eurolive 15" powered speakers (monitors)
- Wiring sized for the system.

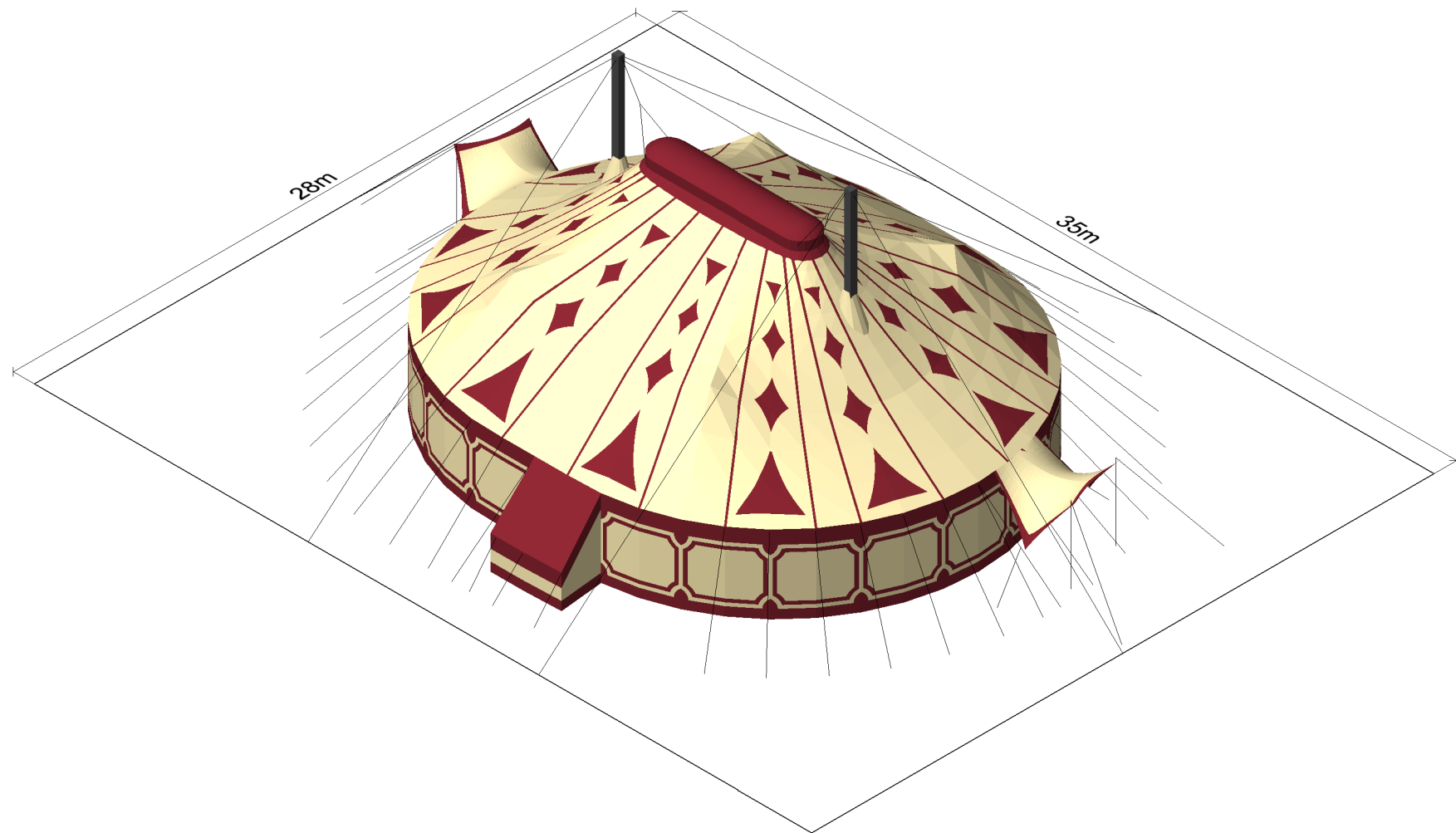
- **Textiles - Set**

- 1 black velvet backdrop in 3 parts (W= 9m / H= 4.6m)
- Walls surround in black brushed cotton
- 1 round structure with red curtains (diam.2m)
- 7x8 gym carpet covered by dance carpets (on stage)
- 1 chandelier diam.2m rigged in cupola

APPENDICES

- **Structural drawing**
- **Exterior view**
- **Interior view**
- **« Concerto Pour Deux Clowns » - Lighting layout**
- **« Concerto pour deux clowns » - Sound**





Chapiteau
18mx22m

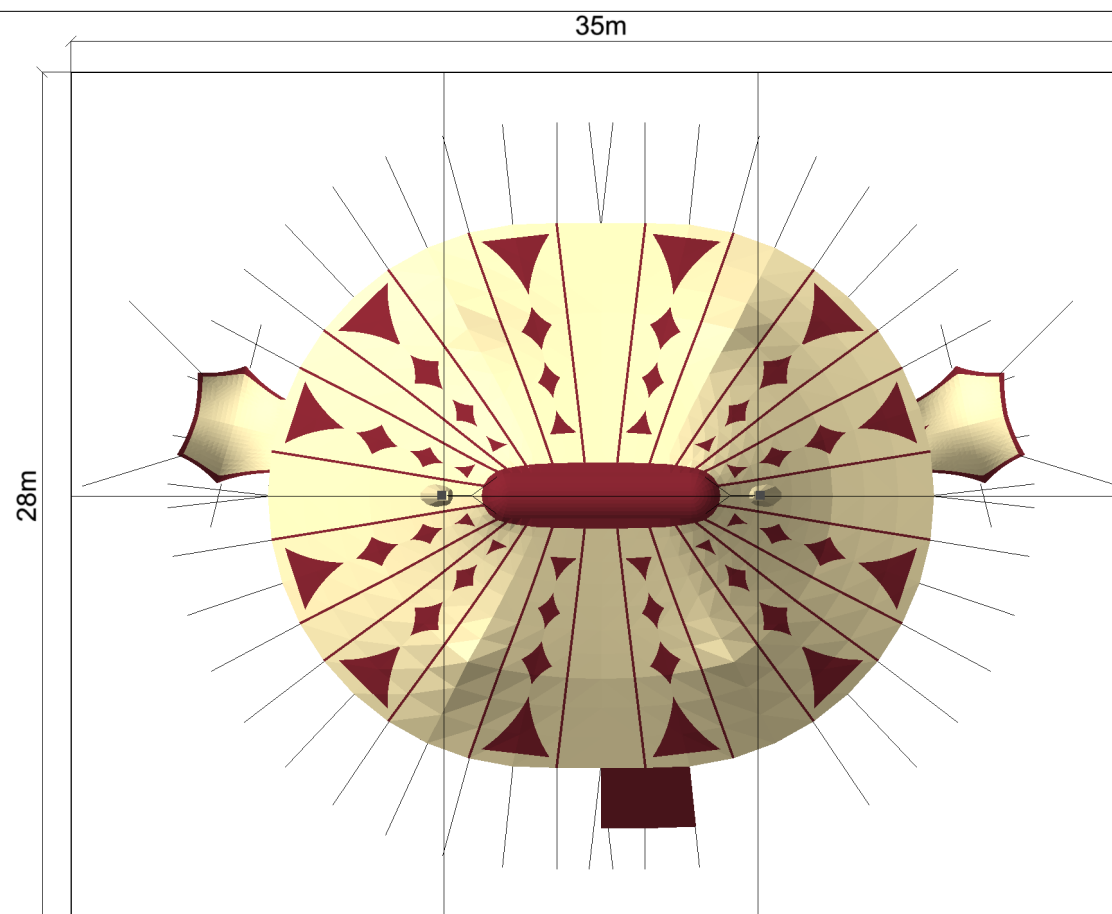
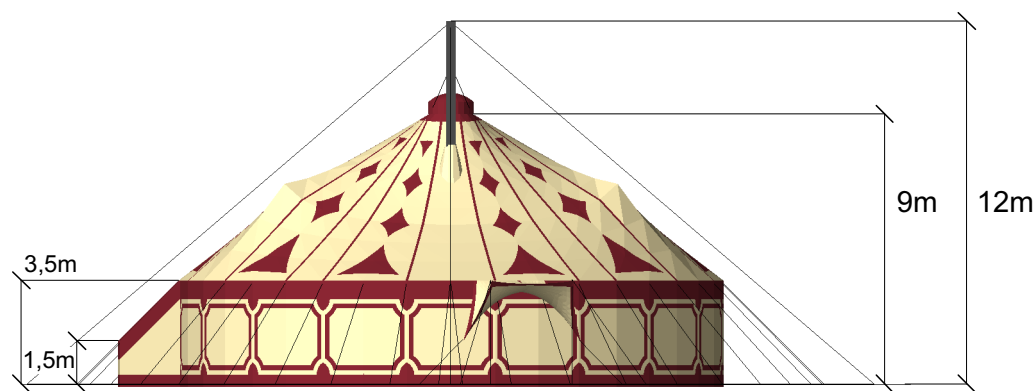
Plan de la structure

VERSION 1

01/10/2020

Format : A3

ECH : 1:250



Contact Technique

Sacha Pinget
+33(0) 648 057 521
regie.vagabonds@gmail.com

**Les Rois
Vagabonds**

Chapiteau
18mx22m

Plan hors tout
avec dégagements

VERSION 1

01/10/2020

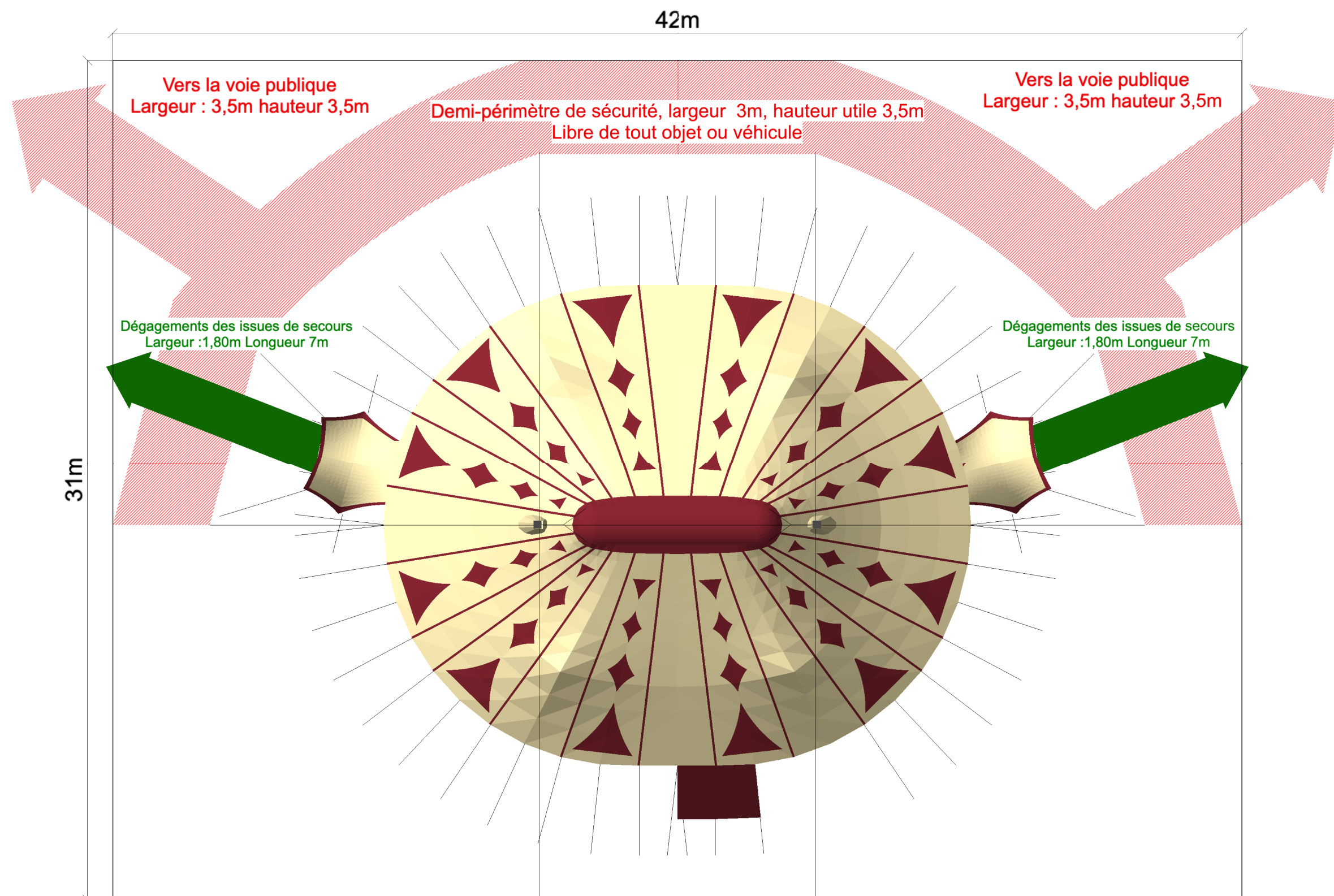
Format : A3

ECH : 1:160

Contact Technique

Sacha Pinget
+33(0) 648 057 521
regie.vagabonds@gmail.com

**Les Rois
Vagabonds**




Chapiteau
18mx22m

Plan D'aménagement
Le Grand Théâtre Éphémère

VERSION 4

22/03/2023

Format : A3
ECH : 1:80

 Circulations principales
Largeur 1,2m minimum

 Alimentation électrique

 Extincteur CO2 x 1

 Extincteur Eau x 2

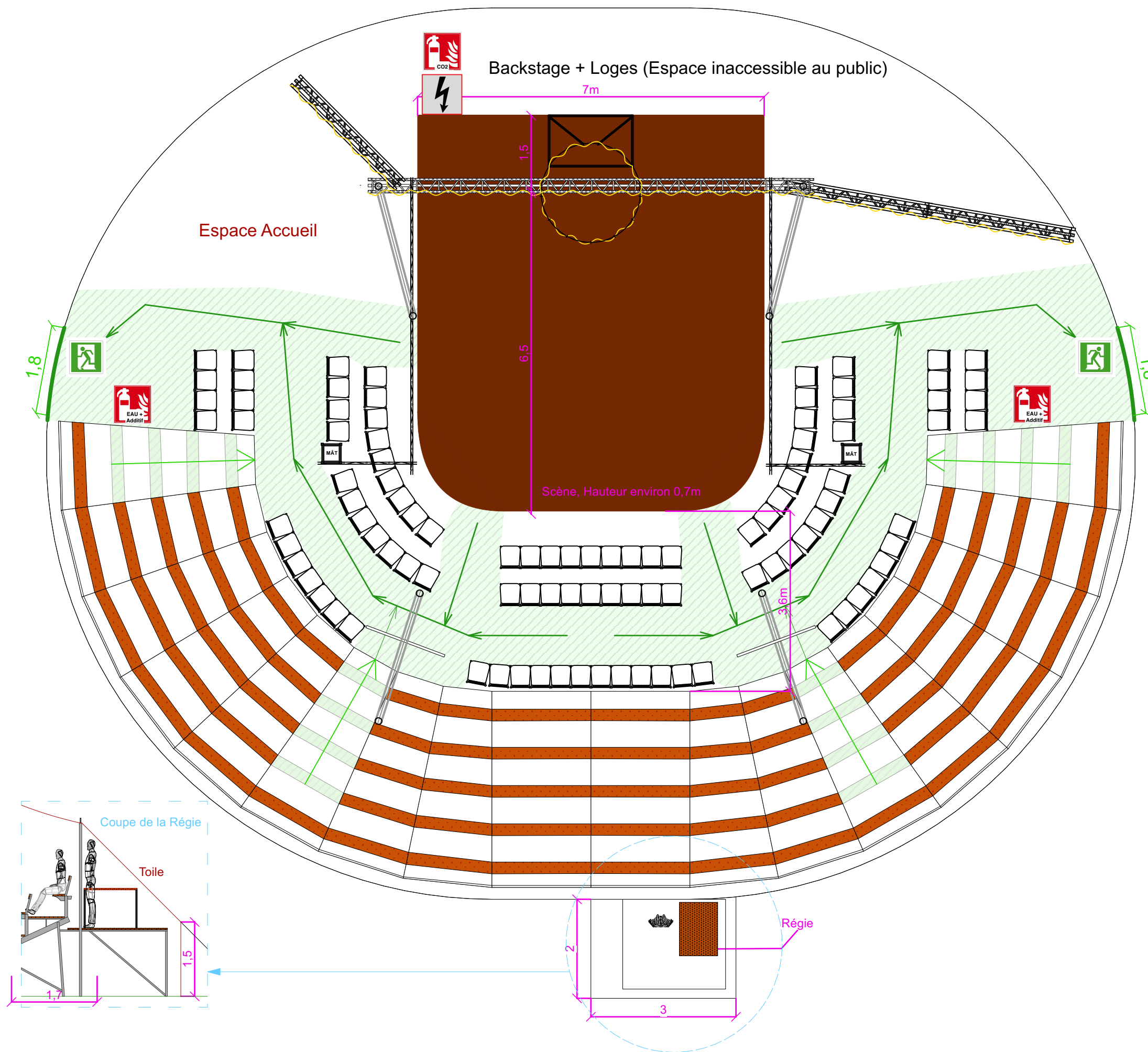
 Pendrillon

Jauge :
227 places de gradin
100 places en chaises

Contact Technique

Sacha Pinget
+33(0) 648 057 521
regie.vagabonds@gmail.com

**Les Rois
Vagabonds**



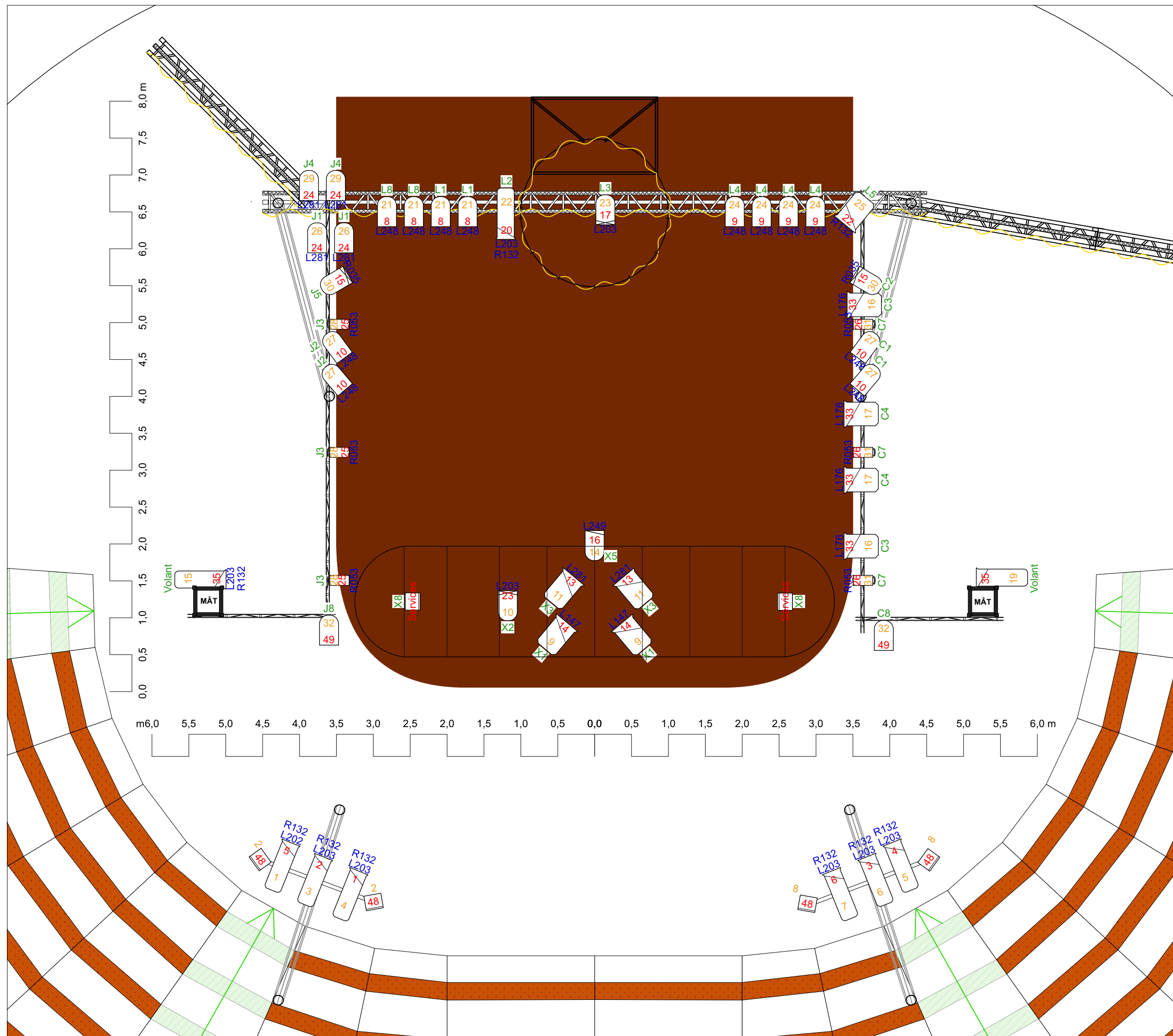
Chapiteau
18mx22m

Plan de feu
"Concerto pour deux clowns"
Le Grand Théâtre Éphémère
VERSION 2

22/03/2023

Format : A3

ECH : 1:50



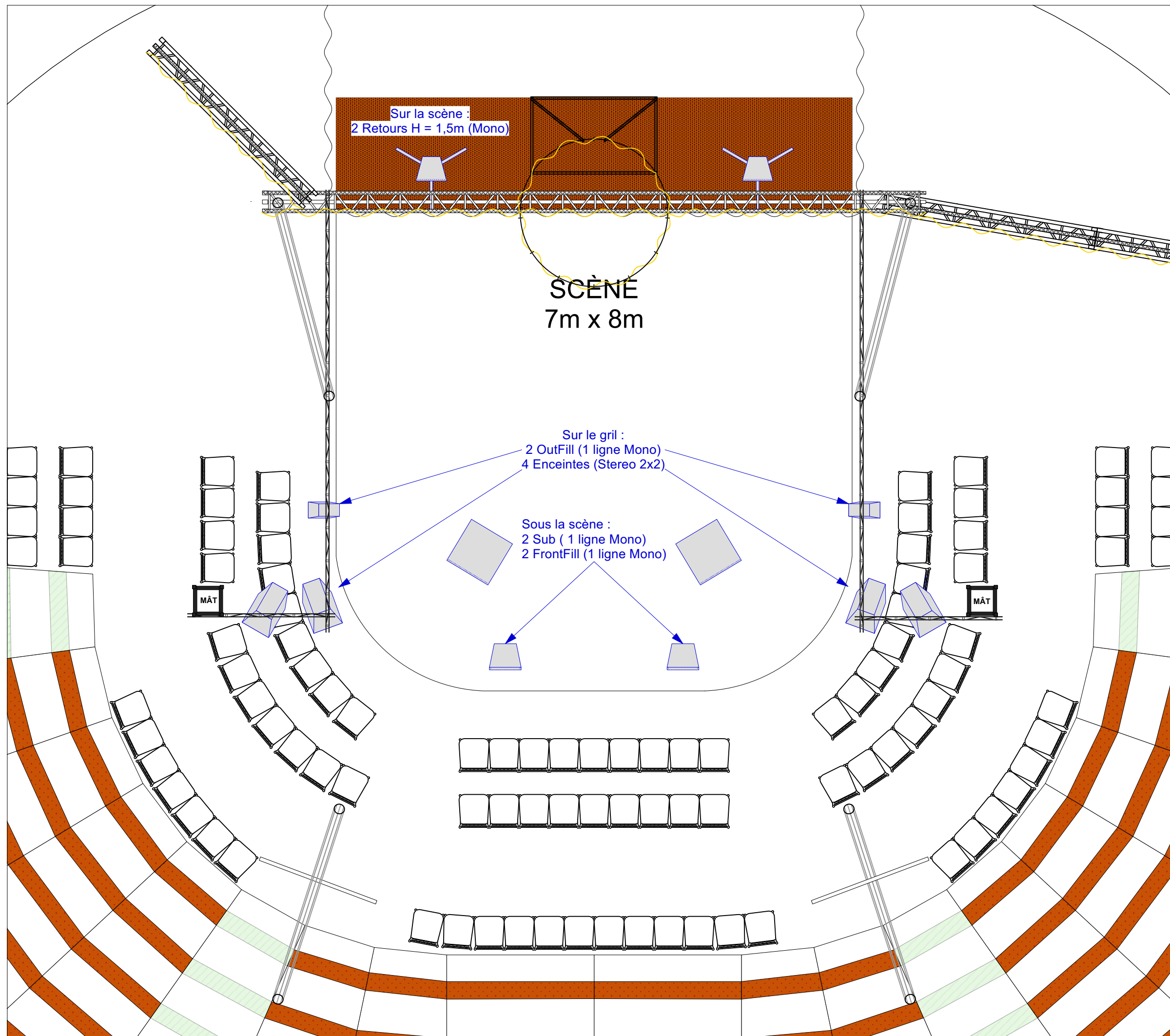
- Découpe
- PAR 64 NSP
- PAR 64 MFL
- PC 1K
- PC 500
- Quartz 500

- Couleur
- Chânel
- Dimmer
- Multi

Contact Technique

Sacha Pinget
+33(0) 648 057 521
regie.vagabonds@gmail.com

Les Rois Vagabonds



Chapiteau
18mx22m

Son
"Concerto Pour Deux Clowns"
Le Grand Théâtre Éphémère
VERSION 3

22/03/2023

Format : A3

ECH : 1:50

Système :
4 RCF M 1201 (Façade)
2 LDESUB 15G3 (Sub)
2 RCF Monitor 8 (OutFill)
2 Technysoud 120°/15° (FrontFill)
2 Berhinger Eurolive 15" (retours /
Plan de diffusion lointain)

1 Console Yamaha LS9 16
1 Reverb Lexicon PCM92

1 Multipaire 12 In / 8 Out
1 Processeur DBX Driverack 260
1 Ampli RCF QPS 9600 (4 out)
1 Ampli Crest Audio (2 out)

Contact Technique

Sacha Pinget
+33(0) 648 057 521
regie.vagabonds@gmail.com

**Les Rois
Vagabonds**